



COMPANY PROFILE

INTRODUCTION

FABAS LUCE → COMPANY PROFILE



MORE THAN FORTY YEARS OF LIGHT

A STORY THAT BEGAN OVER **40 YEARS AGO**. A STORY THAT SPANS GENERATIONS. A STORY OF TRADITION AND **PASSION FOR WORK** THAT STARTS EARLY IN THE MORNING AND ENDS LATE AT NIGHT. A STORY OF **CREATIVE GENIUS** AND **INNOVATION**. A STORY THAT ALSO INVOLVES OUR CUSTOMERS, SUPPLIERS AND ALL THE **PEOPLE** WHO HAVE CONTRIBUTED TO MAKING **FABAS LUCE** GROW.



OUR STORY



FABAS LUCE → COMPANY PROFILE

**FABAS LUCE IS
GROWING ALONG WITH
LED TECHNOLOGY,
BRINGING ITS VISION
OF TECHNICAL AND
DECORATIVE LIGHTING
TO THE WORLD.**



FOR FOUR DECADES, FABAS LUCE
HAS MEANT **PASSION, TECHNOLOGY
AND CREATIVITY**: THESE VALUES HAVE
ENABLED OUR COMPANY TO BECOME ONE

“WE OPERATE IN MORE
THAN 40 COUNTRIES
WORLDWIDE:
WE HAVE BRANCHES IN
ITALY AND GERMANY, AS
WELL AS DISTRIBUTORS
AND AN AGENCY NETWORK
IN EUROPE, AFRICA, ASIA
AND THE MIDDLE EAST.”

OF THE ITALIAN LIGHTING
COMPANIES WITH THE
LARGEST PRESENCE
IN **EUROPEAN AND
INTERNATIONAL MARKETS**.
THANKS TO THE SKILLS AND
KNOW-HOW DEVELOPED
IN **LED TECHNICAL** LIGHTING,

FABAS LUCE HAS SUCCEEDED IN BEING
APPRECIATED IN THE **DECORATIVE
LIGHTING SECTOR** BY PROPOSING
LED LAMPS WITH REFINED **DESIGN**
AND HIGH LIGHTING PERFORMANCE.
THIS PROGRESS DEMONSTRATES
THE COMPANY'S LEADING ROLE IN
THE TRANSITION FROM TRADITIONAL
SOURCES TO LED TECHNOLOGY.

ORIGINS



AZELIO GIBERTI, THE FOUNDER AND INSPIRER OF GIBERTI ILLUMINAZIONE, AND THEN OF FABAS LUCE, AT WORK AT OUR FIRST PREMISES IN BRUGHERIO.



TECHNOLOGIES EVOLVED, LOCATIONS CHANGED, BUT THE MAINSTAYS REMAINED: WORK AS A VALUE AND PEOPLE AS THE PROTAGONISTS OF GROWTH.



A FOUNDER WHO STARTED AT THE BOTTOM BUT AIMED HIGH.

THE LATE 1970S DRIVEN BY THE ENTHUSIASM OF THE TIME, **AZELIO GIBERTI** OPENED A SMALL ELECTRICAL WORKSHOP. FROM THE OUTSET, HIS PASSION, **INTUITION** AND **ENTREPRENEURIAL** SKILLS MARKED THE GROWTH OF THE COMPANY, WHICH SOON SUCCESSFULLY ESTABLISHED ITS POSITION IN EUROPEAN AND MIDDLE EASTERN MARKETS. FROM THE MAKING OF THE FIRST PRODUCT TO THE GENERATIONAL TRANSITION, HE WAS THE BRAINS, THE HEART AND THE **LEADER OF THE COMPANY.**

THE TIMELINE

YEAR AFTER YEAR,
PREMISES AFTER
PREMISES, COUNTRY
AFTER COUNTRY.
A LUMINOUS PATH.



QUALITY, TECHNOLOGY AND DESIGN.
THREE VALUES THAT MAKE ITALY UNIQUE.
THESE THREE VALUES ARE ALSO THE BANNER
OF FABAS LUCE ABROAD.

1979

FABAS LUCE'S
START UP: THE FIRST
FACTORY HAD AN
AREA OF 2.000 SQM



2006

FABAS LUCE OPENED
ITS DAUGHTER COMPANY
FABAS LUCE GMBH IN
ARNSBERG, GERMANY



1998

FABAS LUCE
MOVED TO A NEW
PRODUCTION FACILITY
OF 4.000 SQM



2008

FABAS LUCE BUILT ITS
NEW HEADQUARTER
OF 9.000 SQM WITH A
CUTTING-EDGE
LOGISTICS SYSTEM



2009

HOST & LIGHT
NEW DIVISION FOR
HOTELS, HOSPITALITY
AND CONTRACT



2010

ATILED
NEW DIVISION
FOR LED TECHNICAL
LIGHTING



2011

TECHNO LIGHTING
LIGHTING DESIGN AND
CONSULTANCY



2015

FABAS LUCE OPENED A
SECOND BRANCH IN
OFFENBURG, GERMANY,
FOR ATILED DIVISION



2017

NEW **ATILED**
DIVISION FOR
SHIPBUILDING



2019

SMARTLUCE COMES:
THE VOCAL ASSISTANT
FOR LIGHTING
CONTROL SYSTEM



2019

FABAS LUCE
CELEBRATES
ITS 40TH
ANNIVERSARY



THE PRESENT



OVER THE YEARS, **STEFANO AND DONATELLA GIBERTI** AND **FABIO CASTELLI** HAVE CHANGED THE FACE OF THE COMPANY. THIS HAS RESULTED IN CONTINUOUS EXPANSION IN THE NATIONAL AND INTERNATIONAL LIGHTING MARKET. TODAY, THE HEADQUARTERS OF FABAS LUCE IS A LARGE FACTORY WITH A **STATE-OF-THE-ART LOGISTICS SYSTEM**, WITH SPECIAL SENSITIVITY TOWARDS ENERGY SAVING AND ENVIRONMENTAL SUSTAINABILITY. NEVERTHELESS, INCREASED PRODUCTIVITY HAS NOT AFFECTED THE PROFOUND **SENSE OF ETHICS** DESIRED BY THE OWNERS AND THE AIM OF FABAS LUCE IS ALWAYS THE SAME: TO CONTINUE TO BE SUCCESSFUL WITH ITS PRODUCTS IN ITALY AND AROUND THE WORLD, WITH RESPECT FOR PEOPLE AND REGULATIONS.



IN 2008, WE MOVED TO OUR CURRENT PREMISES, THE MODERN AND GREEN HEART OF THE NEW FABAS LUCE.



DONATELLA GIBERTI, STEFANO GIBERTI AND FABIO CASTELLI.

2006: THE FABAS LUCE NAME AND BRAND FOUND A NEW HOME IN THE STRATEGIC BRANCH IN ARNSBERG (GERMANY).



THE PRESENT

9.500 PALLETS OF
ITEMS IN THE
WAREHOUSE

9.000 SQ.M
OF COVERED
SURFACE AREA

620.000 ITEMS
DELIVERED
IN 2019

OLTRE 2.500 ITEMS MANAGED

50 COUNTRIES WHERE
WE ARE PRESENT
IN THE WORLD

CERTIFICATES:

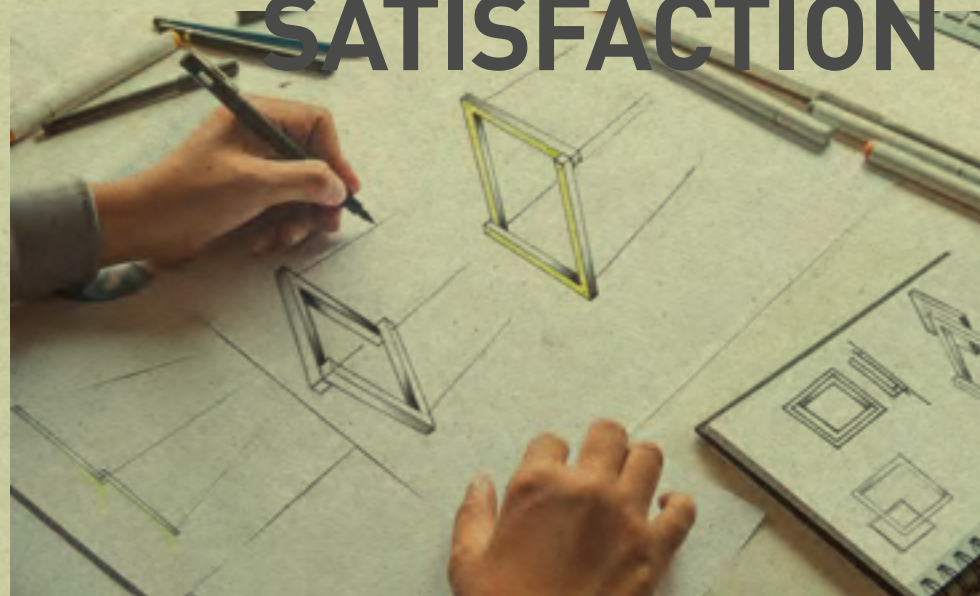


WE HAVE 95% OF OUR PRODUCTS
READY FOR DELIVERY THANKS TO
A LOGISTICS WAREHOUSE WITH
MORE THAN 9,000 PALLET SPACES,
EQUIPPED WITH A CUTTING-EDGE
DIGITAL SYSTEM.



CUSTOMERS ARE OUR PRIORITY

OUR TEAM
ASSISTS THE
CUSTOMER WITH
A PROJECT UNTIL
IT IS PUT IN PLACE,
THEREBY
GUARANTEEING THE
QUALITY OF THE END
RESULT AND SHARED
SATISFACTION



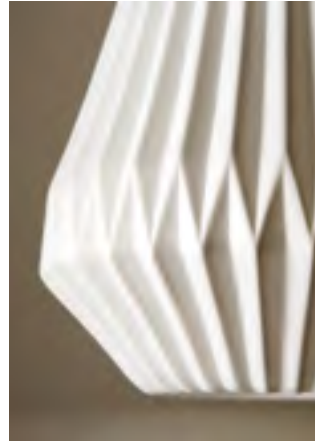
A SPECIAL FOCUS ON QUALITY
PRODUCTS AND OUR **CUSTOMER
SERVICE**, ESPECIALLY IN THE AFTER-
SALES PERIOD, HAS CERTAINLY BEEN

“BEFORE AND AFTER SALE,
FABAS LUCE’S CUSTOMER
NEVER FEELS ALONE, BUT
ALWAYS ACCOMPANIED BY
PROPOSALS, SOLUTIONS
AND COURTESY.”

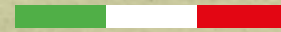
ONE OF THE MAIN REASONS
FOR THE GROWTH OF FABAS
LUCE IN RECENT YEARS.
THIS IS THANKS TO OUR
HIGHLY **PROFESSIONAL
STAFF** WHO PROMPTLY AND
COURTEOUSLY RESPOND
TO THE MOST DIVERSE REQUESTS FROM
OUR MANY CUSTOMERS. **PRODUCT
DESIGN** IS MOSTLY TAKEN CARE OF
BY A TEAM OF ITALIAN DESIGNERS,
WHEREAS THE **PLANNING** AND **PRODUCT
ENGINEERING** ARE ENTIRELY CARRIED
OUT AT THE HEADQUARTERS OF FABAS
LUCE IN ITALY.

A BRIGHTER FUTURE FOR THE ENVIRONMENT

LIGHT AND MATERIAL FROM NATURE. RESPECT AND LOVE OF NATURE.



“AFTER THE LED REVOLUTION, FABAS LUCE CONTINUED ALONG ITS PATH TOWARDS ENVIRONMENTAL SUSTAINABILITY BY SELECTING INCREASINGLY NATURAL MATERIALS. CERAMIC, FABRIC, GLASS AND WOOD: FROM NATURE WITH LOVE.”



“WE BELIEVE WE CAN HELP CREATE A SUSTAINABLE FUTURE BY DEVELOPING INNOVATIVE AND ECO-FRIENDLY LIGHTING SOLUTIONS, REDUCING OPERATING COSTS THANKS TO A LONGER LIFE AND OPTIMISING ENERGY SAVINGS.”

FABAS LUCE HAS ALWAYS FOCUSED ON THE ISSUES OF **ENERGY SAVING** AND **RESPECT FOR THE ENVIRONMENT**: ALL THE COMPONENTS USED, FROM PRODUCTION TO PACKAGING, MEET THE STANDARDS REQUIRED FOR COMPLIANCE WITH ENVIRONMENTAL REGULATIONS. WHEN **LEDs** APPEARED ON THE HORIZON, FABAS LUCE DID NOT HESITATE FOR A MOMENT IN WELCOMING THIS NEW TECHNOLOGY, PERCEIVING ITS **POTENTIAL AND BENEFITS**: THANKS ALSO TO SIGNIFICANT INVESTMENTS IN HUMAN AND MATERIAL RESOURCES, THIS DEVELOPMENT ALLOWED FABAS LUCE TO **REALLY TRANSFORM ITS WAY OF DESIGNING LIGHT**. AMONG OTHER THINGS, THE COMPANY HAS BEEN ABLE TO VARY THE AMOUNT OF LIGHT REQUIRED IN EACH ENVIRONMENT ACCORDING TO REQUIREMENTS EACH TIME.





FABAS LUCE → COMPANY PROFILE

THE SPACES WE LIVE IN EVOLVE TOGETHER WITH US AND OUR **LIFESTYLES**, BECOMING PLACES WHERE WE CAN REDISCOVER WELL-BEING AND **HARMONY**. THE HOME IS A PLACE THAT EMBRACES MANY STORIES: LIGHT REPRESENTS ITS OWN HISTORY AND IS INCREASINGLY THE PROTAGONIST OF THIS **EVOLUTION**. THIS IS BECAUSE IF IT IS IMPORTANT TO FEEL A SPACE IS OUR OWN, THE SAME MUST APPLY TO LIGHT. FABAS KNOWS THIS WELL. THIS IS WHY OUR COMPANY OFFERS A **VARIETY OF PRODUCTS** SO THAT EVERYONE CAN REDISCOVER THEIR OWN STYLE.



FABAS LUCE → EVOLUTION OF LIGHT IN HUMAN SPACES



WHY CHOOSE SMARTLUCE?

VOICE-CONTROLLED LIGHT

FOR FABAS LUCE, **AMAZON ALEXA** AND **GOOGLE HOME** VOICE ASSISTANTS REPRESENT THE FUTURE FOR LIGHTING MANAGEMENT IN THE HOME AND BEYOND. THIS IDEA LED TO THE CREATION OF **SMARTLUCE** LAMPS: TO MAKE THE USE OF SOME FABAS LUCE LAMPS COMPATIBLE WITH VOICE COMMANDS THAT INTERACT VIA YOUR WI-FI NETWORK, WE CAN HELP YOU TO MANAGE YOUR HOME IN A SMART AND DYNAMIC WAY.



FEATURES

Our **SMARTLUCE** lamps are designed to talk directly to your Wi-Fi network via the artificial intelligence of AMAZON or GOOGLE platforms.

They do not require accessories or gateways.

They do not require bridges or other accessories to be controlled via a voice assistant.

They do not require remote controls or apps to activate or control them.

You can control our lamps from your smartphone via the Internet even when you are away from home.

FUNCTIONS

You can use the on/off switch as usual.

You can change the light intensity and switch on/off using the **SMARTLUCE FABAS** app, available for ANDROID/IOS.

You can dim and switch your lights on/off via the website **www.smartluce.com** from anywhere in the world.

You can control your lamps from **GOOGLE HOME** and **ALEXA** voice assistants without requiring a gateway.

OPTIONS FOR USE

Switch on one lamp or all lamps.

Change the light intensity of the lamp. Set various scenarios, e.g. different times of the day.

Control sets of lamps.

Manage the Fabas Luce lamp together with an ecosystem of other products and manufacturers (lamps, sockets, etc.).

No need for dedicated remote controls or apps to control the lamps.





FABAS LUCE → COMPANY PROFILE

ATILED IS A BRAND THAT REPRESENTS THE **TECHNICAL DIVISION** OF FABAS LUCE. IN A FEW YEARS, ATILED HAS PROVED THAT IT CAN OFFER ITS SERVICES TO **ALL TYPES OF CUSTOMERS** AND ACCEPT ANY CHALLENGE THAT REQUIRES A SPECIFIC STUDY OF THE SITUATION AND THE GOAL TO BE ACHIEVED, INCLUDING THE COUNTLESS INTERMEDIATE STEPS OF **CONCEPT CREATION, PLANNING, PROTOTYPING AND TESTING.**

THANKS TO THESE CHARACTERISTICS OF **FLEXIBILITY** AND **READINESS** TO ACQUIRE PROJECT DATA AND TO RESULTING VARIATIONS, OUR COMPANY HAS GAINED **VALUABLE** AND **PRESTIGIOUS WORK CONTRACTS** WITH A MARKET PRESENCE THAT HAS BECOME INCREASINGLY PROMINENT AND SIGNIFICANT.



ATILED → LED TECHNICAL LIGHTING



FABAS LUCE → COMPANY PROFILE



MILAN MALPENSA AIRPORT
Duty Free, Italy



WHATEVER THE PROJECT OR THE
ULTIMATE GOAL, OUR IN-HOUSE LIGHTING
DEPARTMENT GUARANTEES THE ANALYSIS
AND DEVELOPMENT OF THE BEST
TECHNICAL AND AESTHETIC SOLUTION.

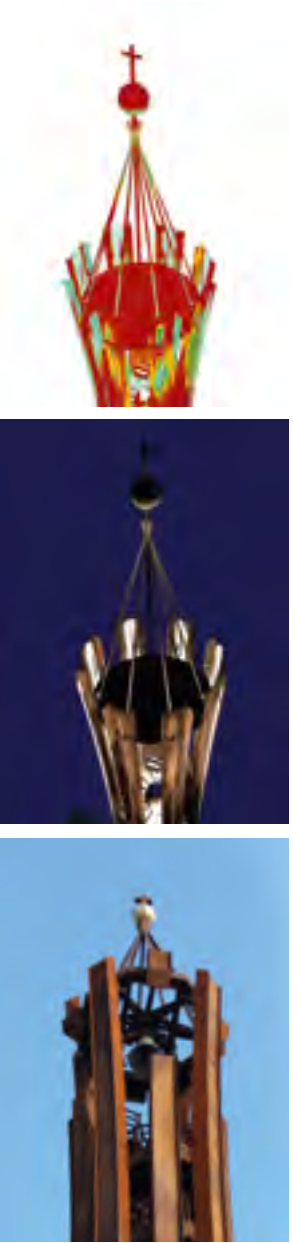
DESALTO
Stand at the Salone del Mobile
2019 Milan, Italy



ATILED → LED TECHNICAL LIGHTING

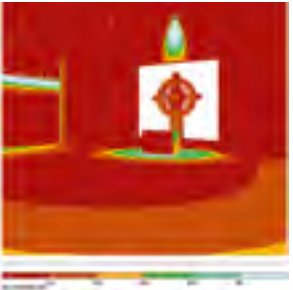


FABAS LUCE → COMPANY PROFILE

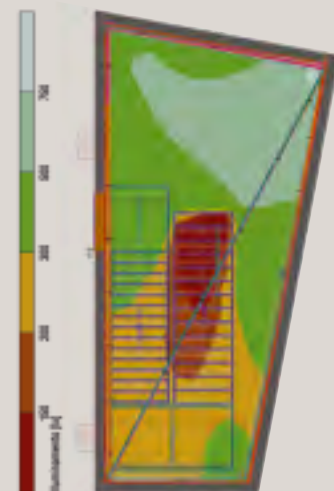


A GOOD PROJECT GUARANTEES SIMPLE INSTALLATION AND A PROFESSIONALLY DONE JOB TO ACHIEVE THE EXPECTED RESULT. WE ASSIST YOU WITH THE PROJECT AND SUPPORT YOU UNTIL IT IS LIT.

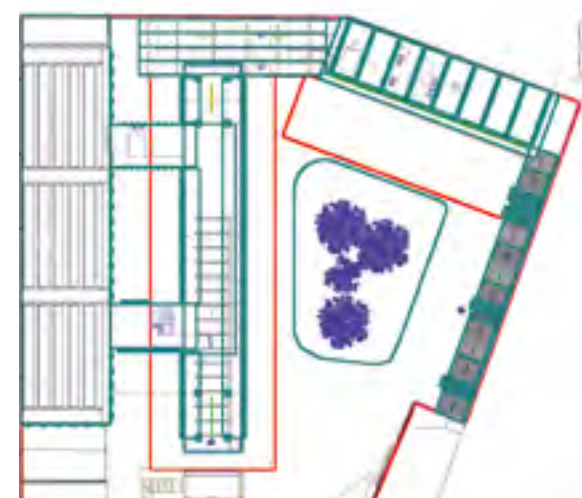
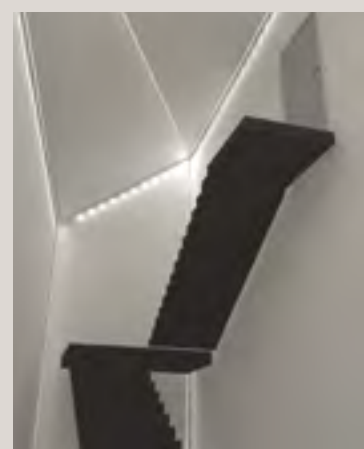
SAN BENEDETTO Cathedral
Lamezia Terme, Italy



ATILED → LED TECHNICAL LIGHTING



SKILLED EMPLOYEES AND MODERN TECHNOLOGY TO CREATE THE PERFECT LIGHT. INDOORS AND OUTDOORS.



CONCERIA STEFANIA
Showroom
Castano Primo, Italy



LED REAL COLOR

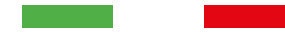


LE SPOSE DI MILANO
Boutique
Milan, Italy



SHOWROOM MOTO
Switzerland

NENETTE
Boutique
Parma, Italy



REAL COLOR LED
PRODUCTS ARE MARKED
WITH THIS SYMBOL:



FABAS LUCE HAS DEVISED A SYSTEM TO **REPRODUCE SUNLIGHT**, WITH A COMPLETE COLOUR SPECTRUM, ENHANCING THE BRIGHTNESS OF COLOURS AND THE

MATERIAL QUALITY OF PRODUCTS AND TEXTURES.

THIS TECHNOLOGY HAS BEEN DEVELOPED ACCORDING TO NEW COLOUR SATURATION PARAMETERS, WHEREBY ILLUMINATED OBJECTS APPEAR

MORE ATTRACTIVE. A **NEW GENERATION OF LEDS**, DESIGNED FOR THE **RETAIL** SECTOR, YET IDEAL FOR ANY PROJECT REQUIRING ABSOLUTE COLOUR FIDELITY AND AN EMOTIONAL AND WELCOMING ENVIRONMENT: **CLOTHING, MAKE-UP, FOOD** AND, OF COURSE, **ART** ARE THE IDEAL SECTORS FOR THE APPLICATION OF THIS TECHNOLOGY. AVAILABLE IN A WARM AND NATURAL VERSION.

**FABAS LUCE S.p.A.
HEADQUARTERS**

Via Luigi Talamoni, 75
20861 Brugherio (MB) Italy
Tel 0039 039 890 69 1
0039 039 214 22 06
Fax 0039 039 214 22 08
info@fabasluce.it

FABAS LUCE GmbH

Westring, 5
D-59759 Arnsberg Germany
Tel 0049 29 32 / 8 90 16 60
Fax 0049 29 32 / 8 90 16 62
vertrieb@fabasluce.com

**Divisione ATILED Germania/
ATILED-Abteilung Deutschland**

Franz Volk Strasse, 5
77652 Offenburg Germany
atiled.germany@fabasluce.com

VISIT:



FABAS LUCE



ATILED
TECHNICAL
LIGHTING



ATILED
NAVAL
LIGHTING

WE ARE PRESENT ON:

